

DIY Storage Cabinet

By **Anika's DIY Life**

Difficulty

Advanced

Build a simple storage cabinet with a drawer and doors with adjustable shelves. This easy-to-build versatile piece of furniture can be used in any room!



Tools

Kreg Tools



[Rip-Cut™](#)



[Kreg® Pocket-Hole Jig 720PRO](#)



[Straight Edge Guide](#)



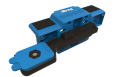
[Quick-Flip](#)



[Drawer Slide Jig](#)



[Cabinet Hardware Jig](#)



[Cabinet Door Mounting Jig](#)



[Concealed Hinge Jig](#)



[Classic 3" Face Clamp](#)



[Right Angle Clamp](#)



[Multi-Mark™](#)



[90° Pocket-Hole Driver](#)

Other Tools

Staple Gun

Circular Saw

Drill/Driver

Miter Saw

Random Orbital Sander

Table Saw (optional)

Materials

Wood Products

1.5 Sheet Of Plywood , ¾"

.5 Sheet Of Plywood , ¼"

1 Board , 2x2x8

Hardware & Supplies

1 Box Of 1 ¼" Pocket Hole Screws (See Tools List)

1 Box Of 2" Pocket Hole Screws (See Tools List)

1 Box Of 2 ½" Pocket Hole Screws (See Tools List)

4 Cabinet Hardware Of Choice

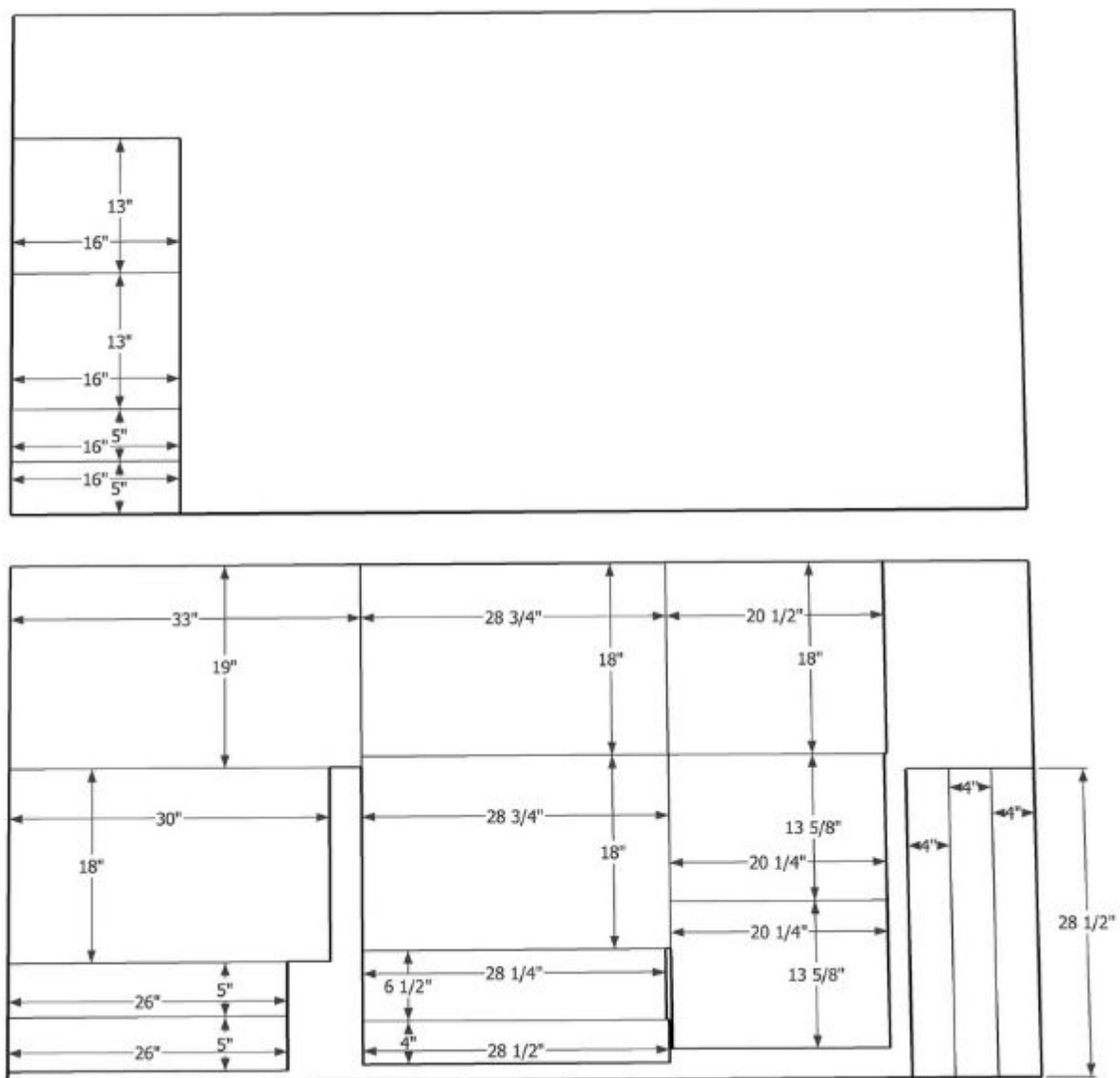
1 Paint Or Stain In The Color Of Choice

1 16" Drawer Slides

2 Inset Frameless Door Hinges (2 Pairs)

Cut List & Parts

- 2 3/4" Plywood (Doors) , 20 1/4" X 13 5/8"
- 1 3/4" Plywood (Drawer Front) , 28 1/4" X 6 1/2"
- 1 3/4" Plywood (Top) , 33" X 19 1/2"
- 1 3/4" Plywood (Divider) , 20 1/2" X 18"
- 4 3/4" Plywood (Rails) , 28 1/2" X 4"
- 2 3/4" Plywood (Sides) , 28 3/4" X 18"
- 1 3/4" Plywood (Bottom) , 30" X 18"
- 2 3/4" Plywood (Shelves) , 13" X 16"
- 2 3/4" Plywood (Drawer Long Side) , 26" X 5"
- 2 3/4" Plywood (Drawer Short Side) , 16" X 5"
- 1 3/4" Plywood (Back Support) , 28 1/2" X 4"
- 1 1/4" Plywood (Back) , 29 1/2" X 22"
- 1 1/4" Plywood (Drawer Bottom) (If Not Using Dados) , 27 1/2" X 16"
- 2 Boards (Legs) , 2x2x5" (Long To Short End At 10-degrees- Parallelogram)
- 2 Boards (Long Aprons) , 2x2x22" (Short To Short End At 10-degrees- Trapezoid)
- 2 Boards (Short Aprons) , 2x2x9 1/2"



Directions

1

Watch The Video

Check out the YouTube video for this project.

[Watch The YouTube Video](#)

2

Prepare the boards

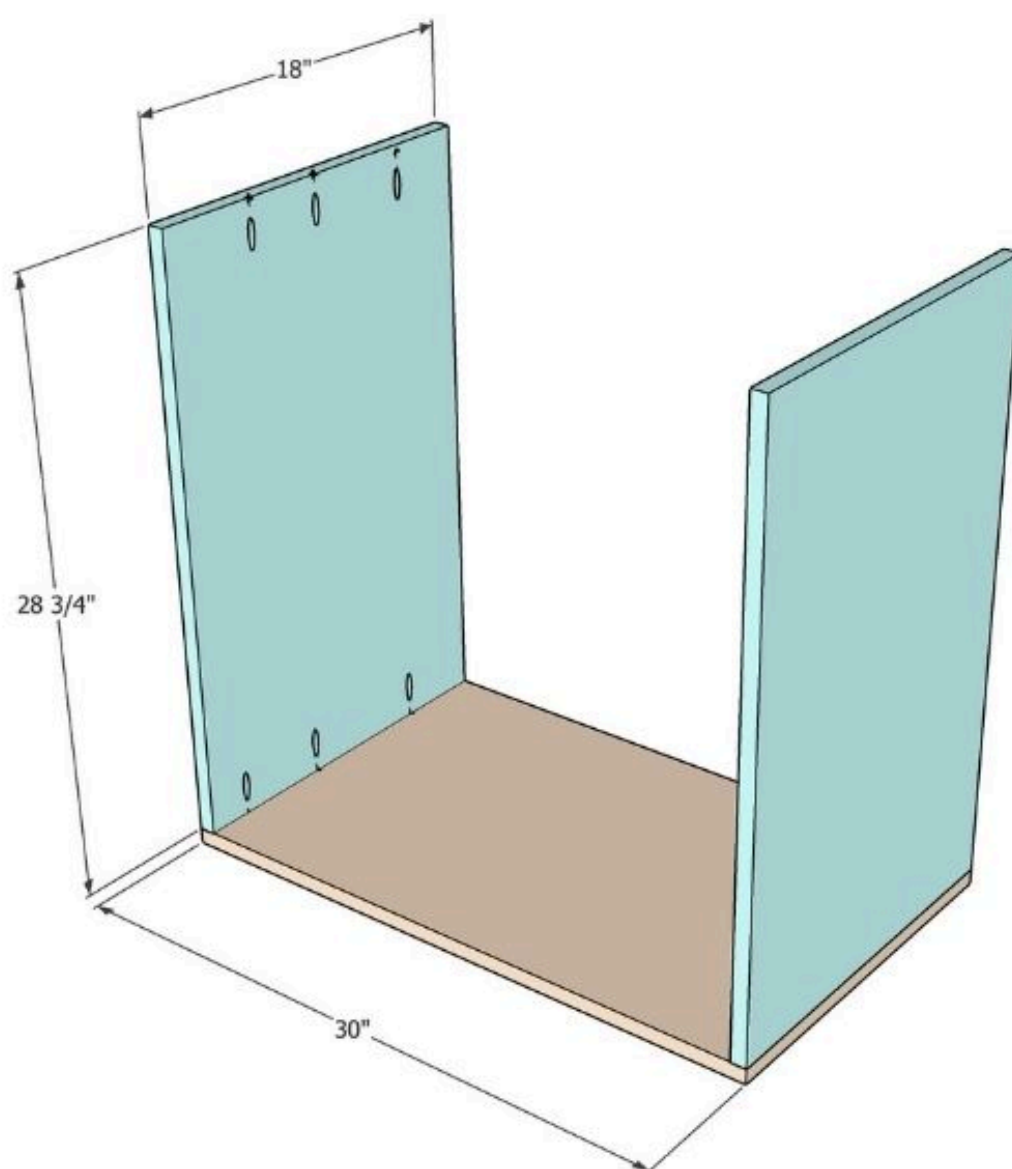
Make the cuts per the cut list. Review the plans and make pocket holes where needed. Pocket holes in plywood are made with $\frac{3}{4}$ " setting on the pocket hole jig and pocket holes in the 2x2 is made with $1\frac{1}{2}$ " setting.

Apply edge banding to all the edges that will be visible.



3**Attach the sides**

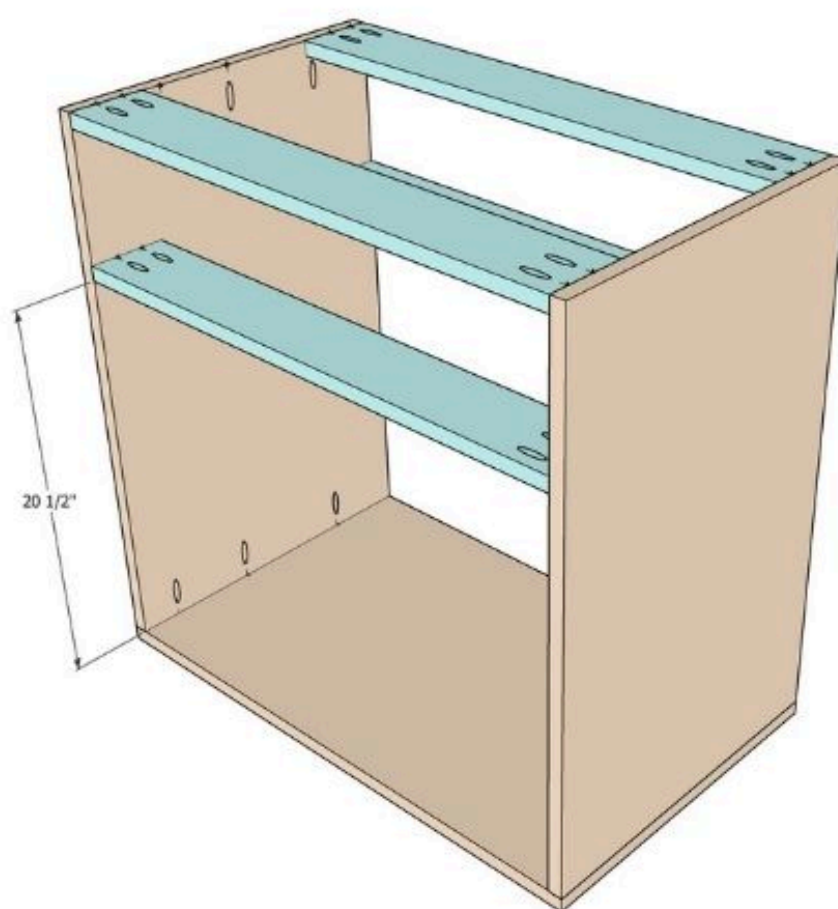
Attach the sides to the bottom using 1 1/4" pocket hole screws.



4**Attach the rails**

The first set of rails is attached to the top of the cabinet using wood glue and 1 ¼" pocket hole screws.

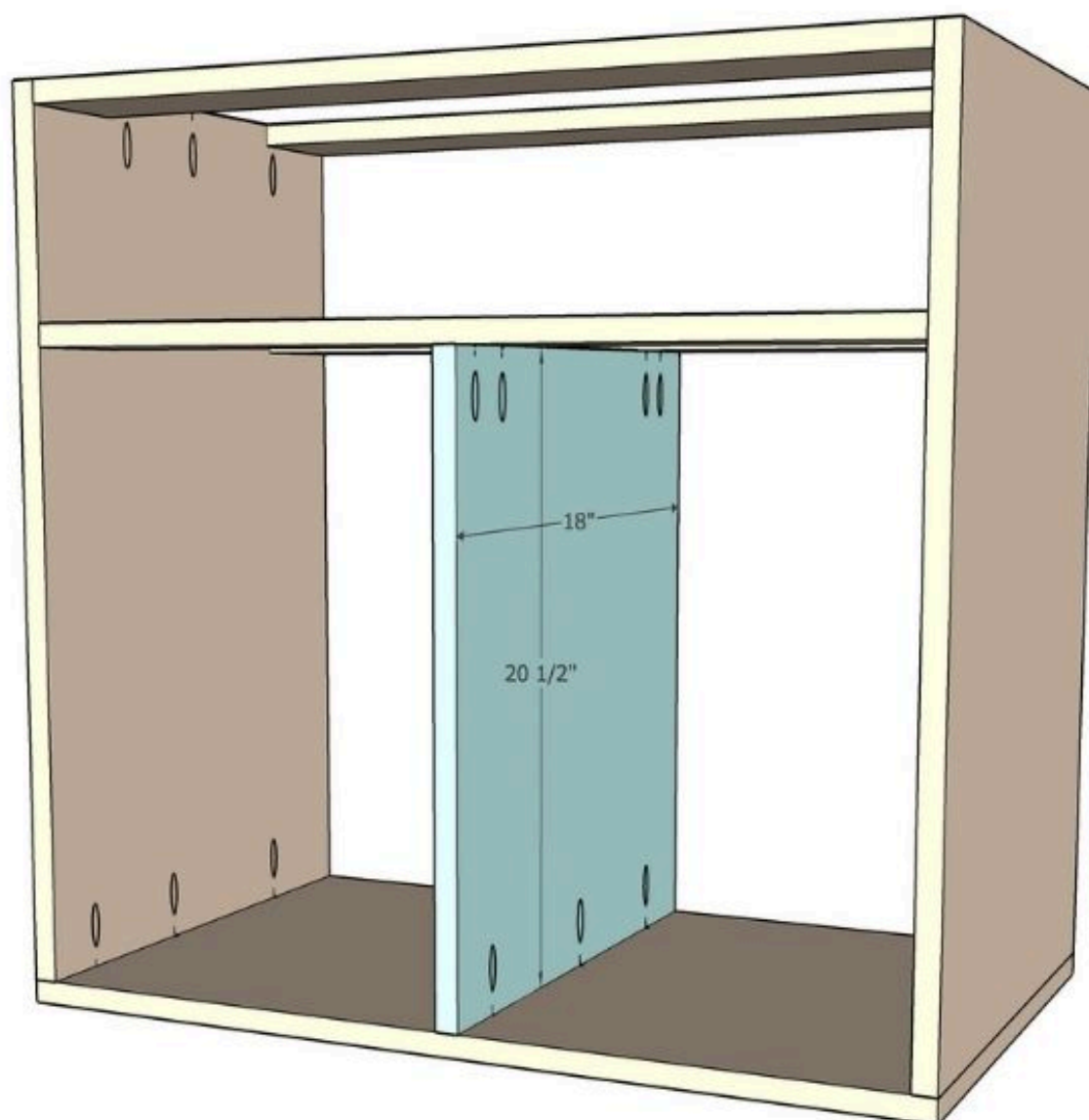
The second set of rails is attached as shown below using pocket hole screws.



5**Attach the divider**

Measure and mark the exact location of the center divider.

Add the divider. Make sure it is square and level prior to attaching with pocket hole screws.



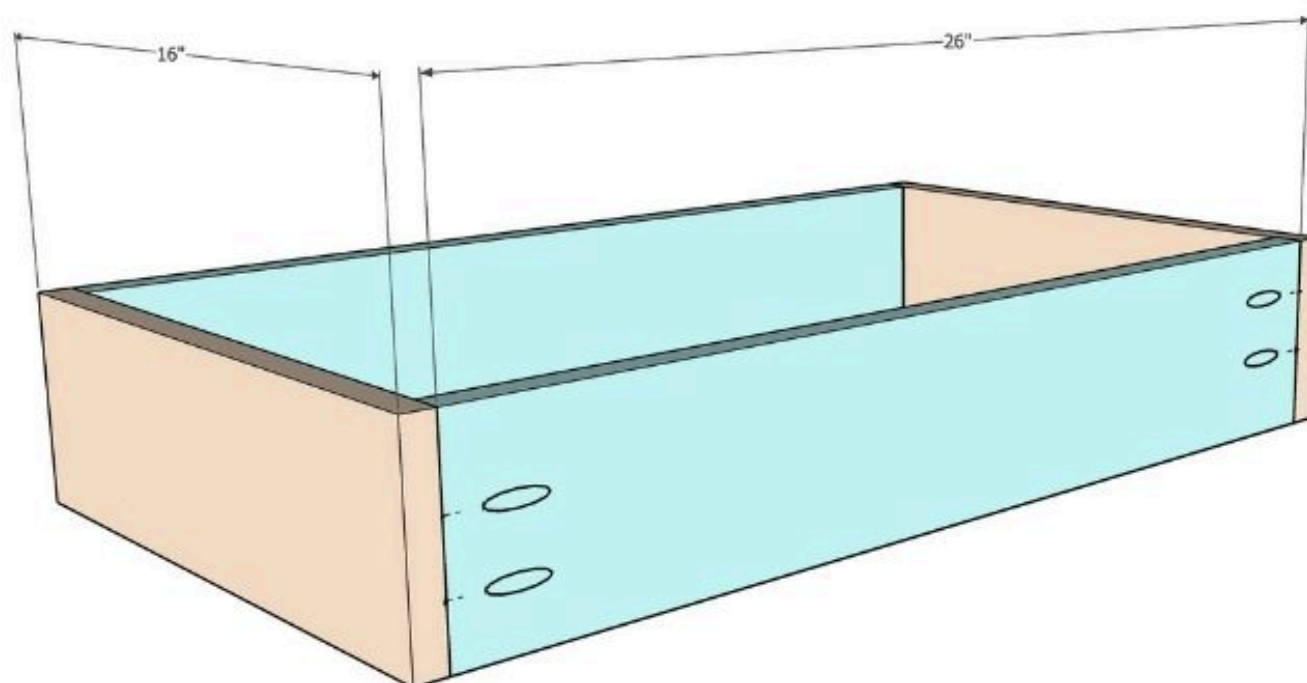
6

Build the drawer box

Build the drawer box as shown below.

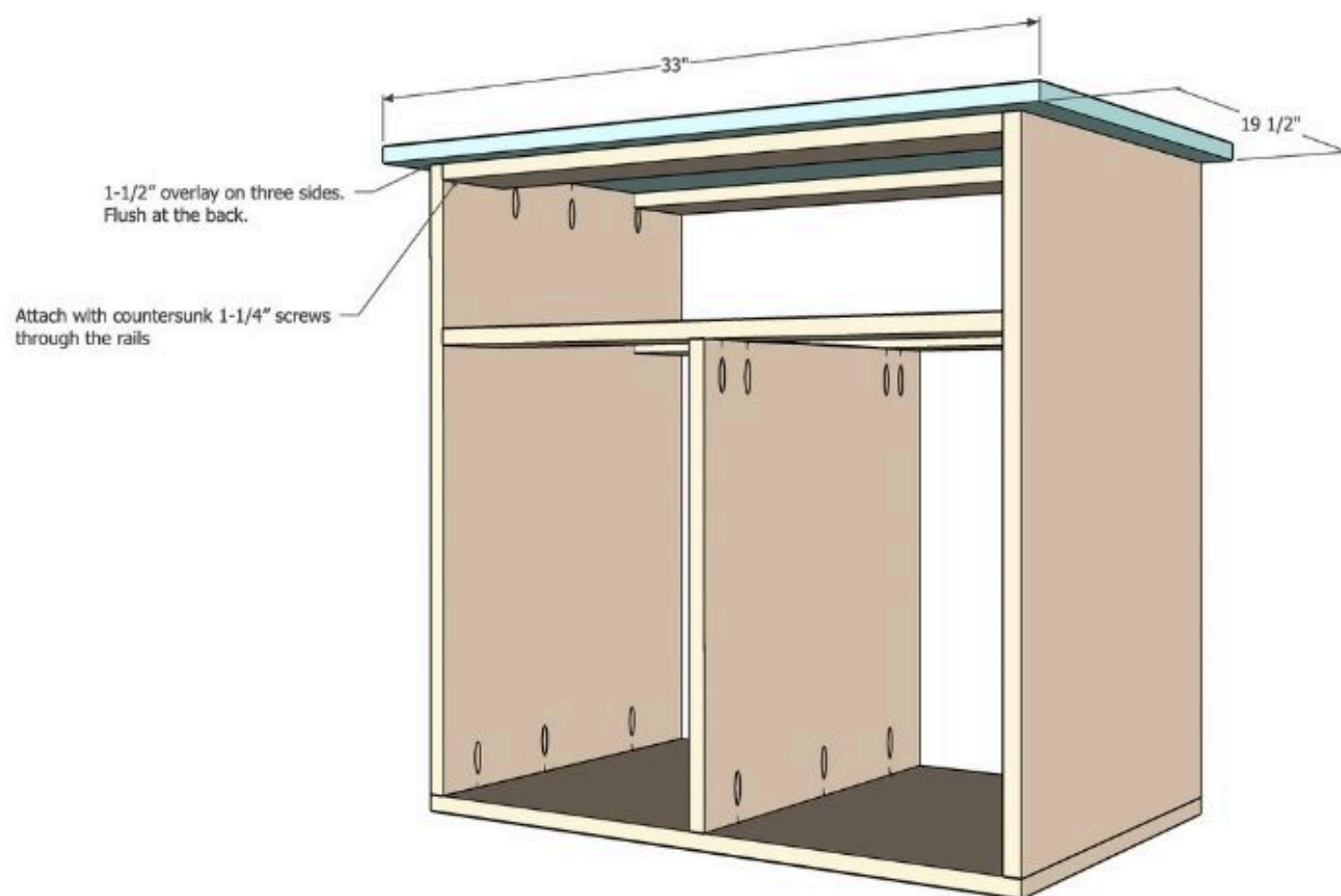
The drawer box can be built two ways - either with the bottom sitting in a dado groove or on the outside.

Install the drawer slide and make sure the drawer works before removing it for the next step.



7**Attach the top**

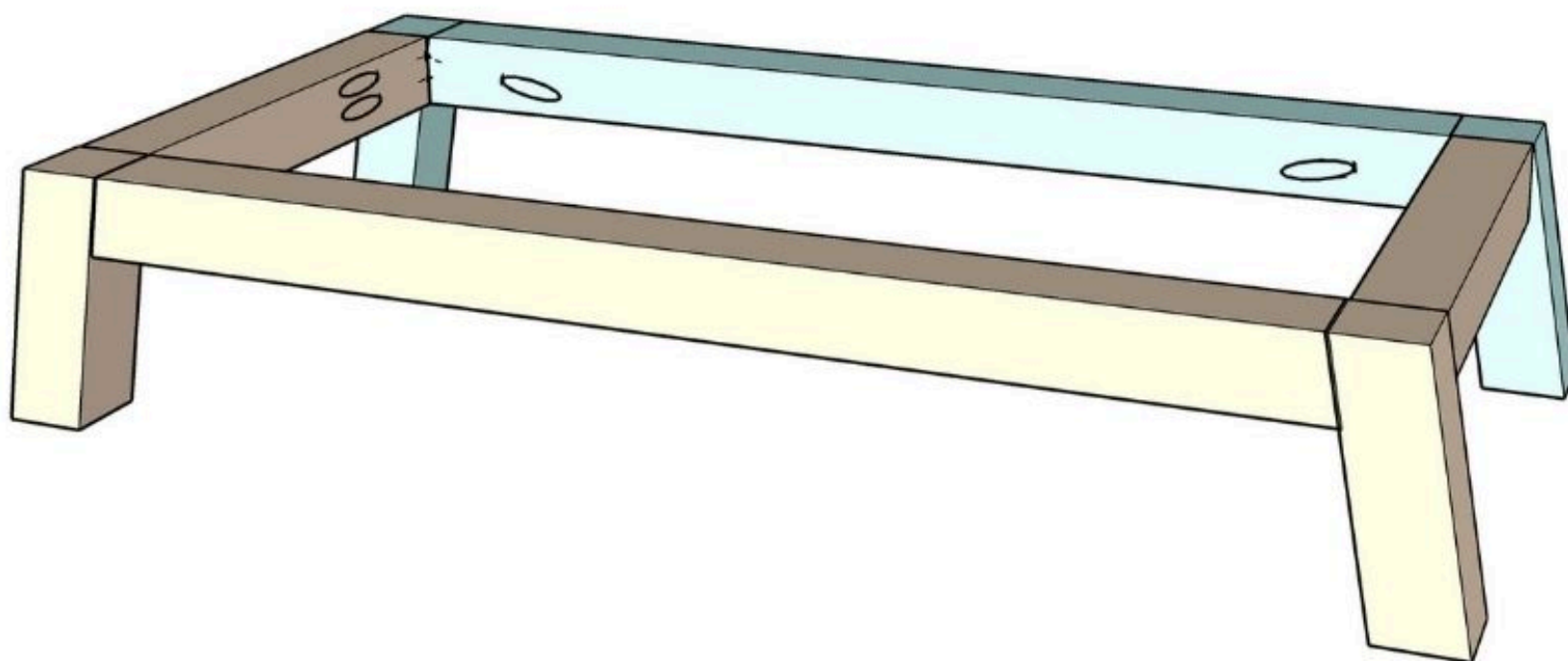
Make sure that the top is well centered before attaching with pocket hole screws through the sides and countersunk pocket hole screws in the rails.



8

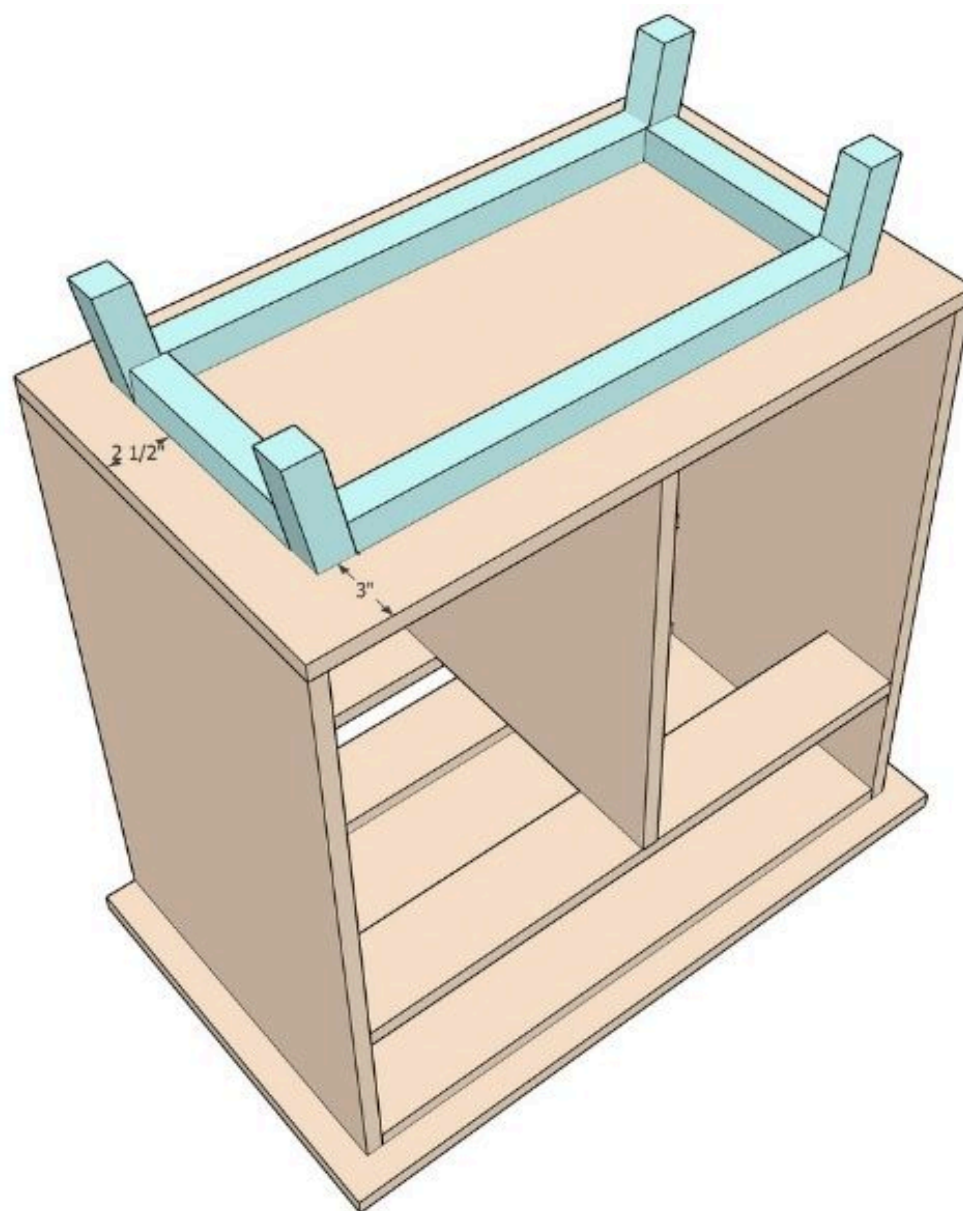
Build the base

Build the base using the 2x2 boards as shown.



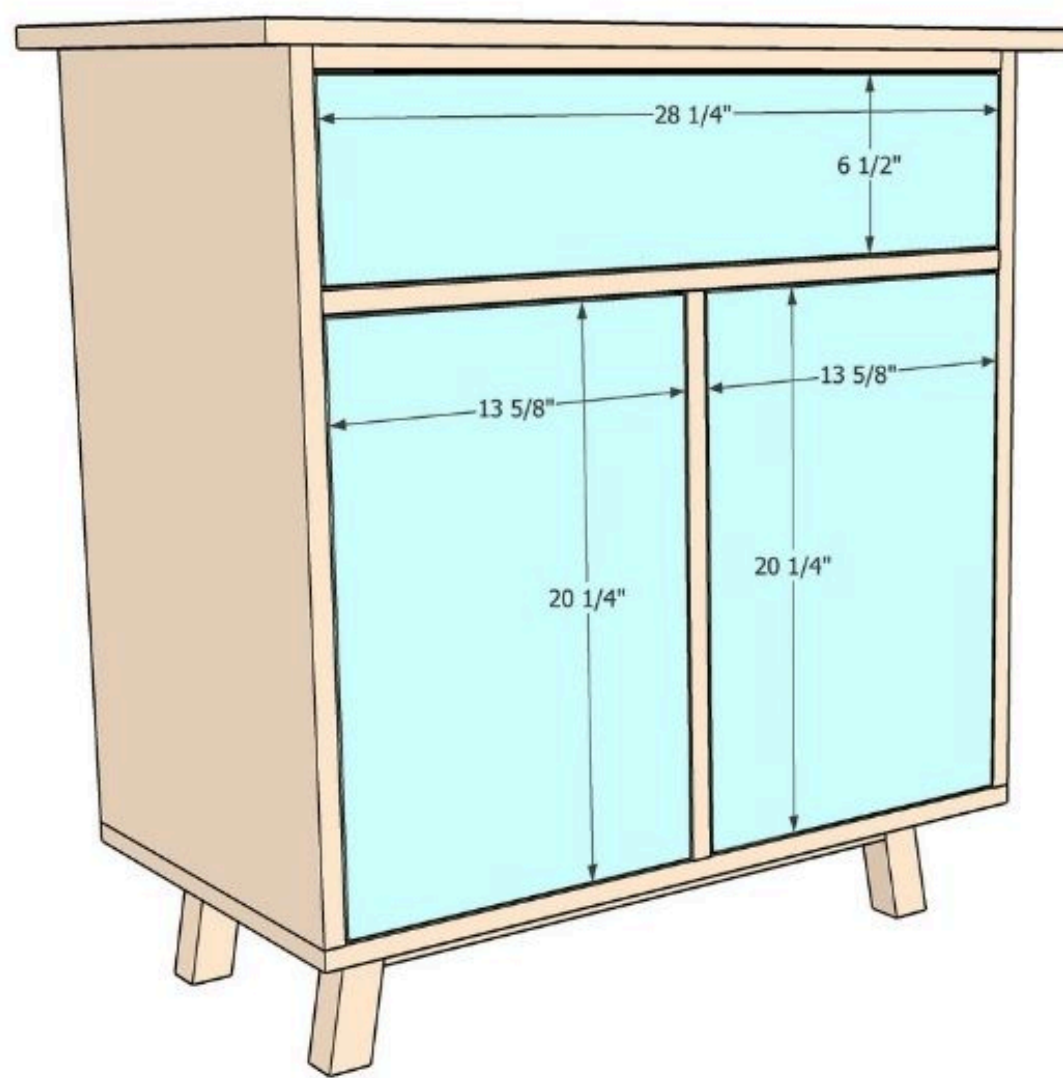
9**Attach the base**

Center and attach the base to the bottom of the cabinet frame using countersunk 2" pocket hole screws.



10**Install drawer and door**

Install the drawer front as well as the doors using the cabinet door mounting jig set to the inset door setting.

**11****Attach the cabinet hardware**

Using the hardware jig attach pulls to the cabinet.

12**Add the back**

In order to anchor the cabinet to the wall, you can add back support.

Also, add a backer board to the bottom part of the cabinets using a staple gun.

